

MICAS-X Installation Instructions

version 2.1.0

Table of Contents

1	Versions of MICAS-X.....	1
2	Instructions for installation of the executable (.exe) version of MICAS-X.....	1
3	Instructions for installation of the source code version of MICAS-X.....	4

1 Versions of MICAS-X

MICAS-X is available in two formats: as an executable program (a .exe), and as source code which must be run within LabVIEW. When installed as an executable, it is not necessary to install a copy of LabVIEW. However, in this case, debugging of the program is limited, and the code cannot be edited or changed.

MICAS-X also is available with various licenses. The full license of MICAS-X can be distributed as either source code or a .exe. The Demo version of MICAS-X is only available as a .exe. The Limited (Ltd) license of MICAS-X is normally distributed as a .exe, whereas the Student Edition is normally distributed as source code.

Before installing MICAS-X, refer to the Chapter 2 of the user manual for more information on installation issues.

2 Instructions for installation of the executable (.exe) version of MICAS-X

If your copy of MICAS-X is delivered as source code, you will not find a folder named “Installer”. In this case, refer to the instructions at the end of this document under Instructions for installation of the source code version of MICAS-XX.

The Limited (Ltd) version of MICAS-X is usually distributed as an executable, and thus the instructions in this section should be followed to install an Ltd version of MICAS-X.

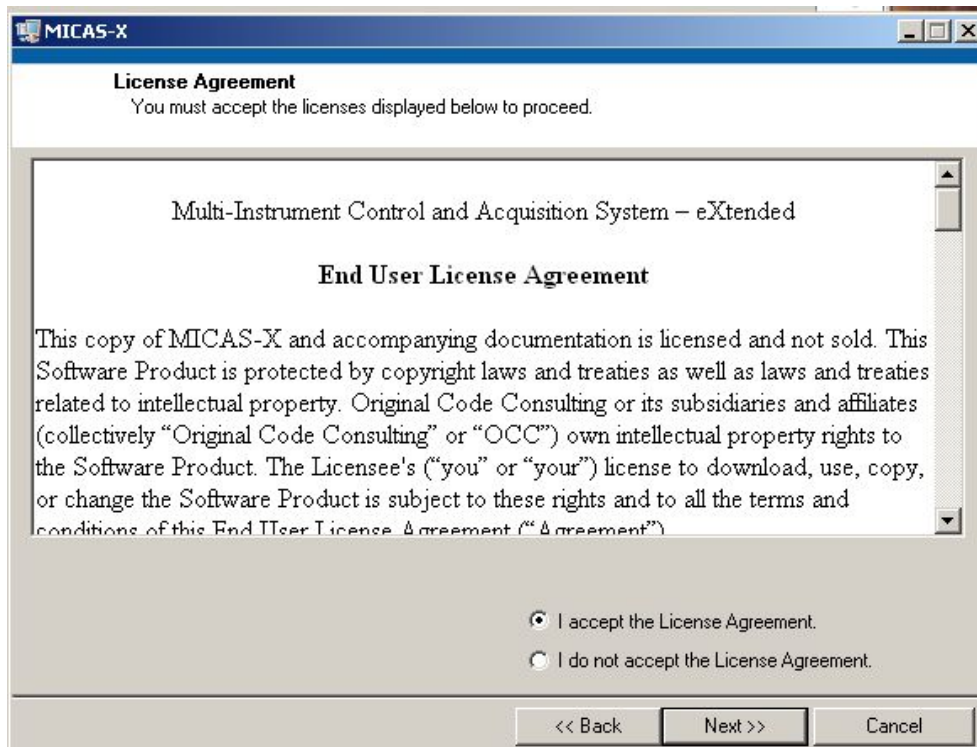
When installing this program using a USB thumb drive, insert the drive into the USB slot in your Windows computer. Once inserted, find the drive (ex. E:), navigate to the Installer directory, and double-click on setup.exe.

You may be prompted to download Microsoft .Net 4.0 before the software can download. Click 'Agree' in the pop-up window to continue installation. In the next window, click the checkbox stating you have read and accept the license terms.

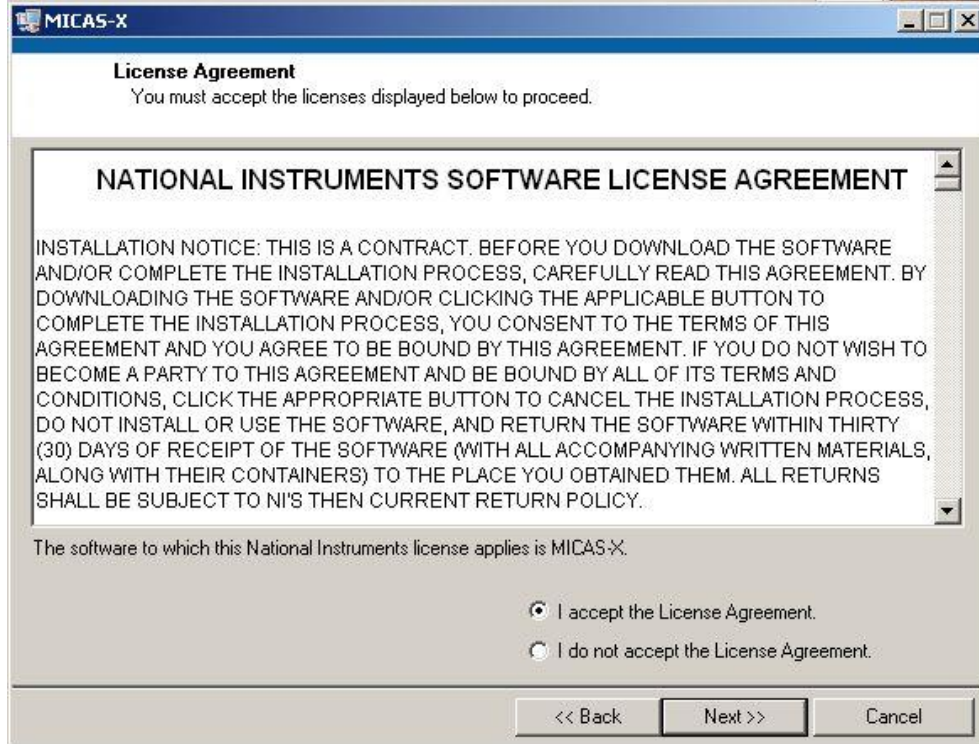
A screen will appear thanking you for installing MICAS-X while the installer initializes. It is recommended that you close all other applications before installing MICAS-X.

Next, a screen will appear asking you to detail the primary installation directory. Do not change the directories that the installer has selected.

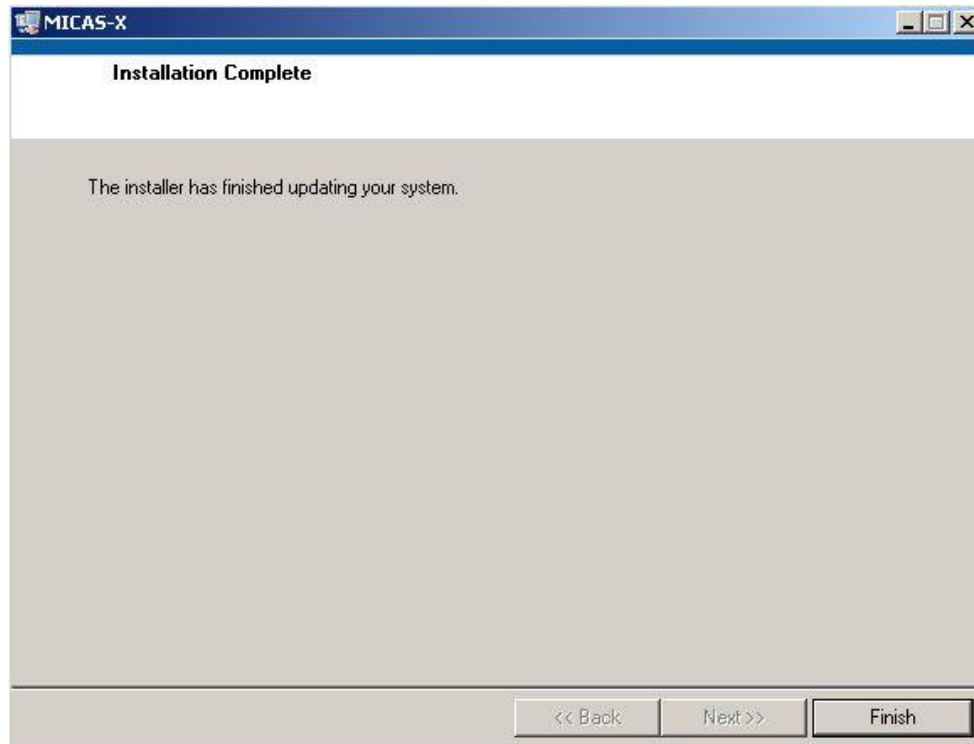
The MICAS-X End User License Agreement will then appear. To continue, you must click “accept” to agree to the terms and conditions listed in the agreement. Click the “next” button to proceed.



Next, the National Instruments Software License Agreement will appear. You must agree to the terms and conditions specified by selecting the “I accept” button, then clicking “next.”



After agreeing to the NI License Agreement, a screen will appear asking you to confirm a summary of the software used. Click “next” to begin the installation. The install time may vary depending on the extent to which other, previous software has already been installed. The window will give a progress bar. Please wait until the program claims “Overall progress” is 100% complete and the screen states “Installation Complete” to click the “next” button to finish installation.



To run the program effectively, you must restart your computer before use. It is recommended that you do this immediately after installing MICAS-X.

If you are installing the full version of MICAS-X, then the final step in the installation process for the executable version is to copy the "OCC" folder, found on the USB drive, to the root directory of C:. If you are installing the Demo version of MICAS-X, this step is done automatically

3 Instructions for installation of the source code version of MICAS-X

If you are using MICAS-X as source code and running it inside LabVIEW, copy the "MICAS-X" folder located on the USB drive to the root directory of C:. Also copy the "OCC" folder located on the USB drive to the root directory of C:. The use of this software implies acceptance of the MICAS-X End User License Agreement found in the install of the executable program and in the file path OCC\MICAS-X Support\Documentation. Please review the EULA before installing and using MICAS-X.

The Student Edition of MICAS-X is usually distributed as source code, and should be installed following the instructions in this section.

When run in source code rather than as a compiled program, you will also need to ensure that the required LabVIEW toolkits in use are installed with your copy of LabVIEW. Some of these dependencies are shown below.

Toolkit	Required For
PID and Fuzzy Logic	Controllers Driver
Modbus	Modbus Driver
LabVIEW RT	MICAS-X-RT
LabVIEW FPGA	MICAS-X-RT with custom FPGA code
CVT and CCC	MICAS-X-RT
System Management and Information Library	Scan Engine Driver